

Block Island Marine Program 2023 Field Season



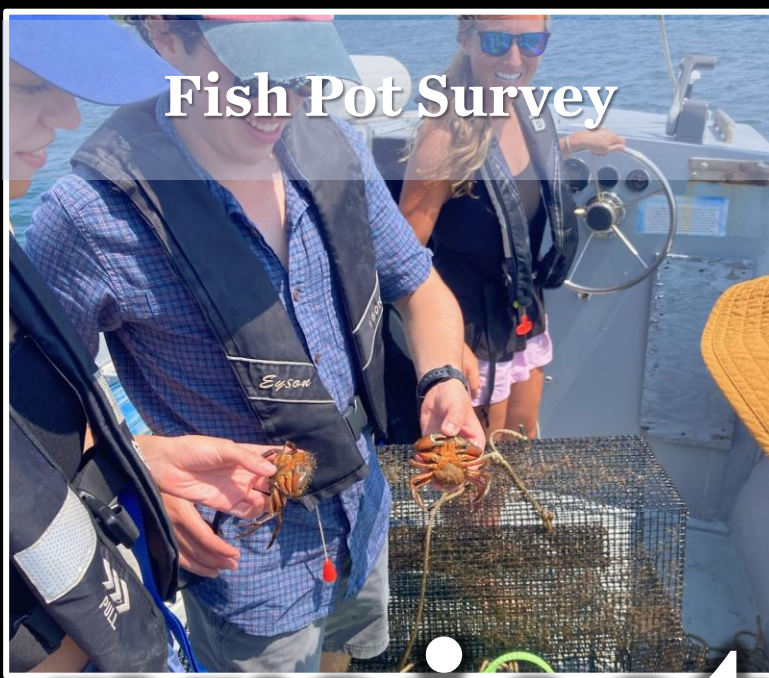
An aerial photograph of a large, calm body of water, likely a salt pond, surrounded by a coastal landscape. The water is a deep blue-green color. In the background, there are green hills and a few buildings. To the right, a cluster of houses with red roofs is visible, along with a small dock and several boats. The sky is clear and blue. The text "Great Salt Pond" is overlaid in the center of the image in a large, white, serif font with a black outline.

Great Salt Pond

Beach Seine Survey



Fish Pot Survey



Bay Scallop Survey



6 projects

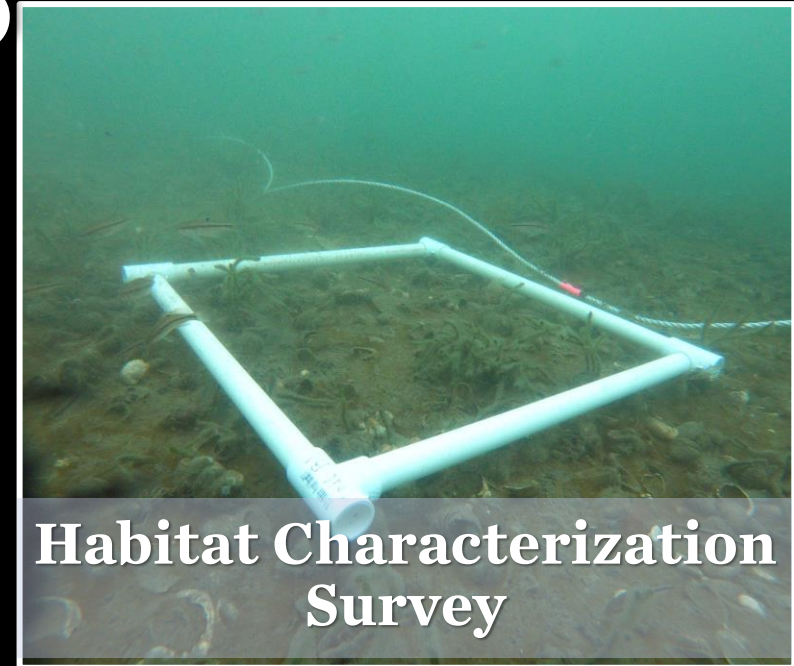
Salt Marsh Monitoring



Water Quality Monitoring



Habitat Characterization Survey





**All made possible thanks to
our seasonal staff!**



Beach Seine Survey



60 seine sets

The background of the image shows a close-up of a fish's scales and fins. The scales are small, overlapping, and have a metallic sheen with iridescent colors of blue, green, and purple. The fins are visible in the lower-left corner, appearing as dark, translucent structures. The overall texture is highly detailed and naturalistic.

**55 different species
caught in seine survey
15,677 finfish
825 invertebrates**

A woman with dark hair tied back, wearing a dark t-shirt with a logo, is focused on measuring a small, dark fish on a white ruler. The ruler has markings in centimeters and millimeters. The scene is outdoors near a body of water, with other people partially visible in the background. The text '228 juvenile winter flounder recorded for seine survey' is overlaid in large white font across the center of the image.

**228 juvenile winter flounder
recorded for seine survey**



**137 blue crabs measured
during the seine survey**

10 years of data



Fish Pot Survey





**48 fish
trap hauls**



**5 different species
caught in fish traps**

379 fishes

514 invertebrates



234 scup caught in traps



406 spider crabs caught in traps



**48 eel
pot
hauls**

A close-up photograph showing a person's hand holding a white ruler over a small, dark-colored fish caught in a black mesh net. The fish is positioned against the ruler for measurement. The ruler has markings in centimeters and millimeters, with numbers 1 through 18 visible. Text on the ruler includes "Made in U.S.A. by Mildco" and a phone number "800-799-8...". The background is a blurred natural setting with green foliage.

**11 different species
caught in eel pots
858 fishes
392 invertebrates**



**621 juvenile black sea bass
caught in eel pots**

202 green crabs caught in eel pots



8 years of data





Bay Scallop Survey

A close-up photograph of two bay scallops resting on a light-colored wooden surface. The scallops are positioned one above the other, with the top one slightly offset. Their shells are a pale, yellowish-tan color with a distinct scalloped edge. Small, dark blue spots are visible along the margins of both shells. The background is a soft-focus view of a body of water and a distant shoreline under an overcast sky.

**242 bay scallops observed
along transects**



17 years of data

Salt Marsh Monitoring



**24 fixed vegetation plots
surveyed**



**3,526 nekton individuals
observed**





**4 bird
surveys
conducted**

8 years of data





Water Quality Monitoring

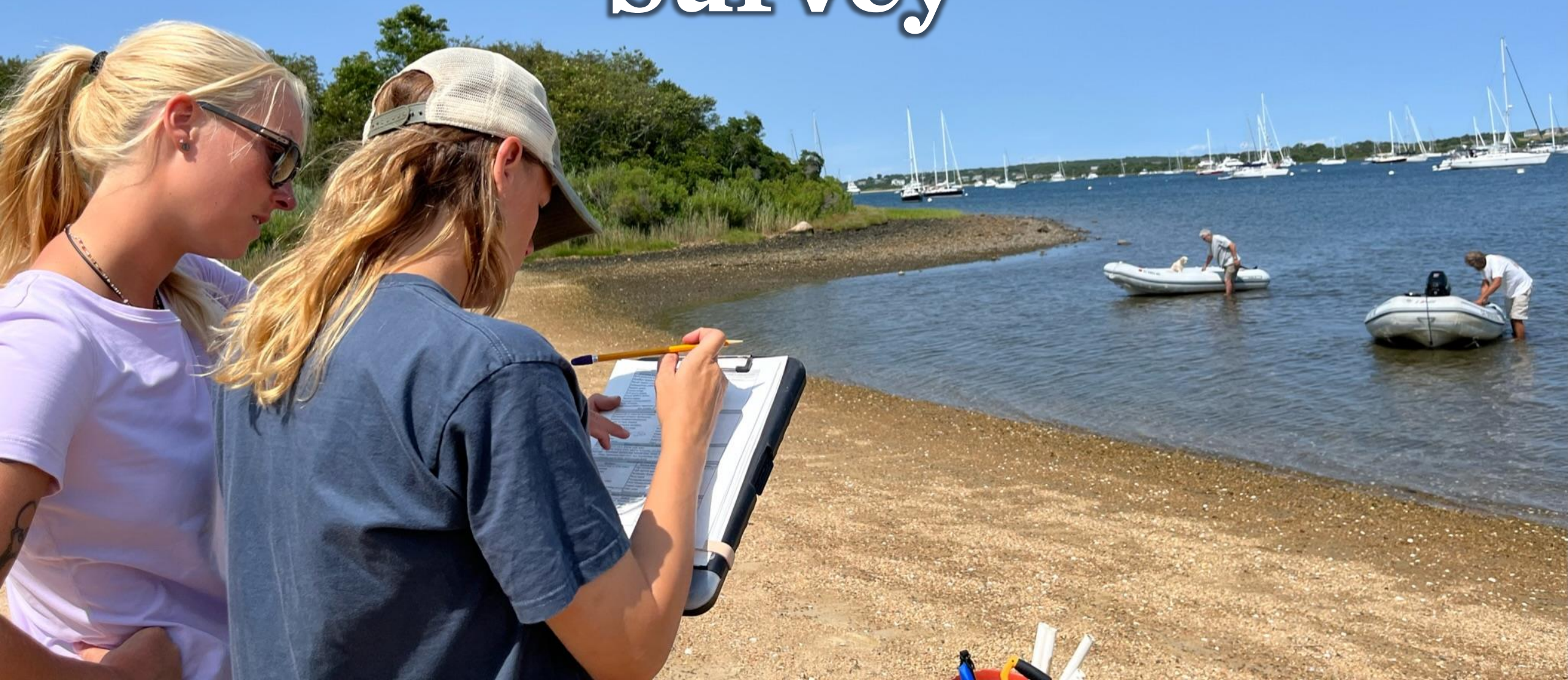
**2,601 data
points
recorded for
temperature,
salinity,
dissolved
oxygen**

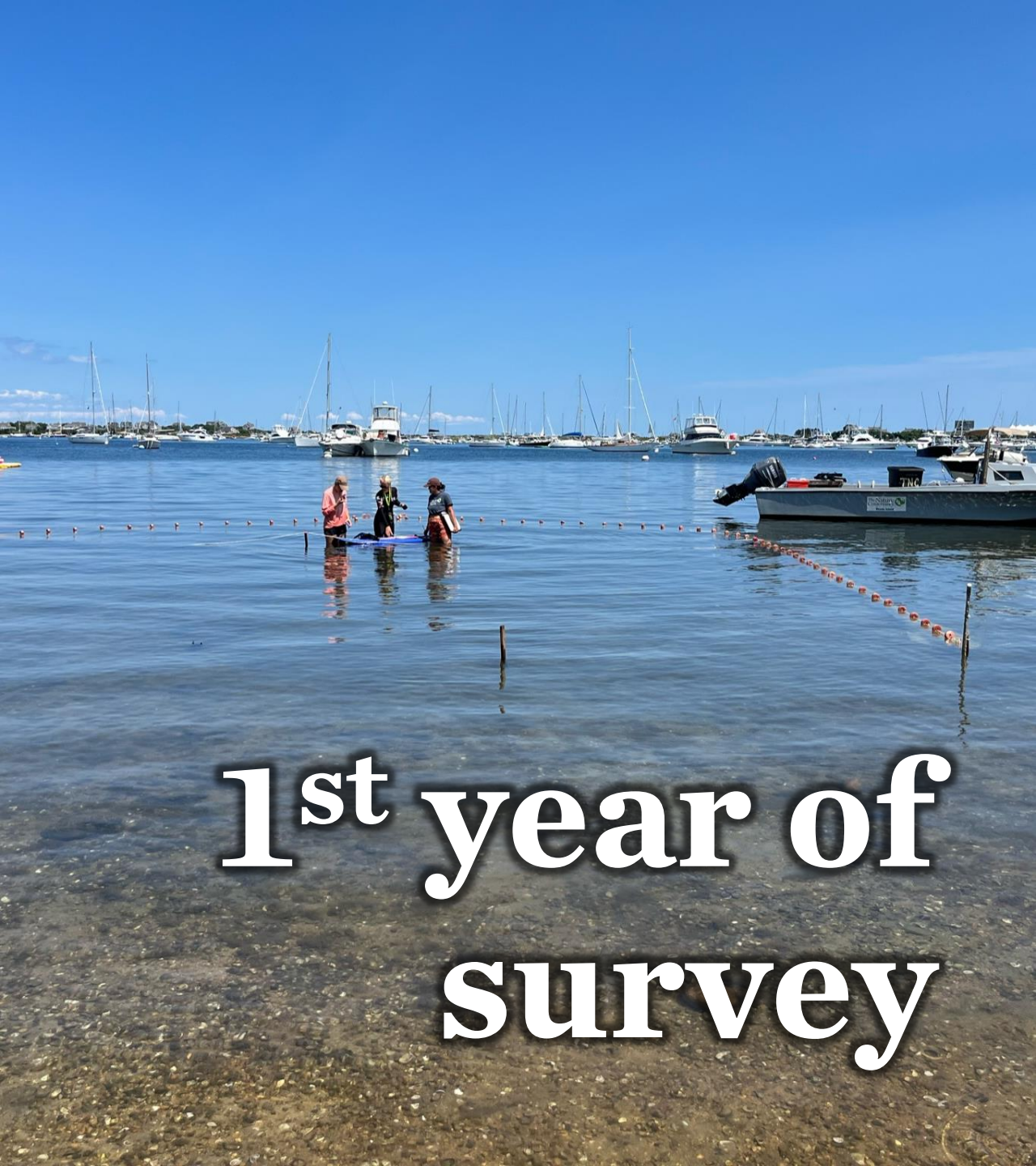


7 years of data



Habitat Characterization Survey





**1st year of
survey**

Nature Programs



12 marsh mucking programs



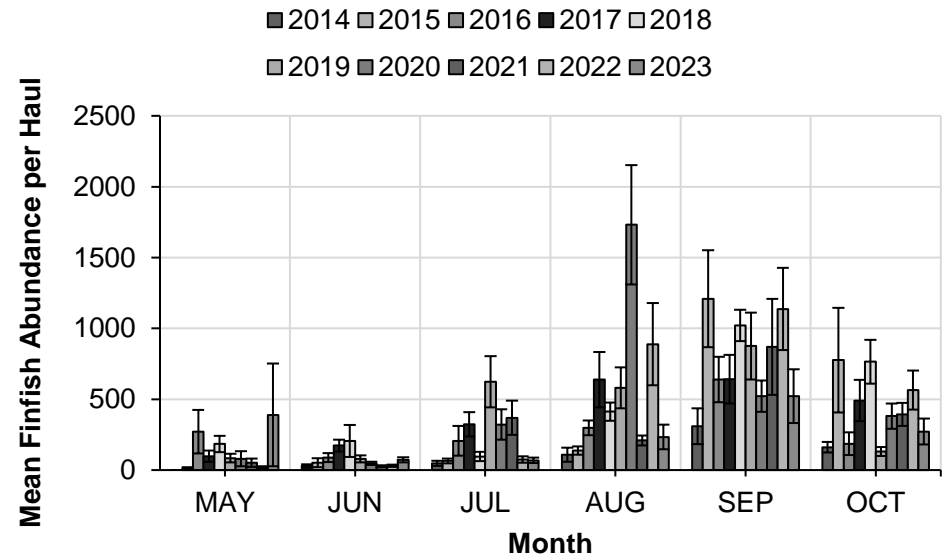
14 seine programs in Old Harbor



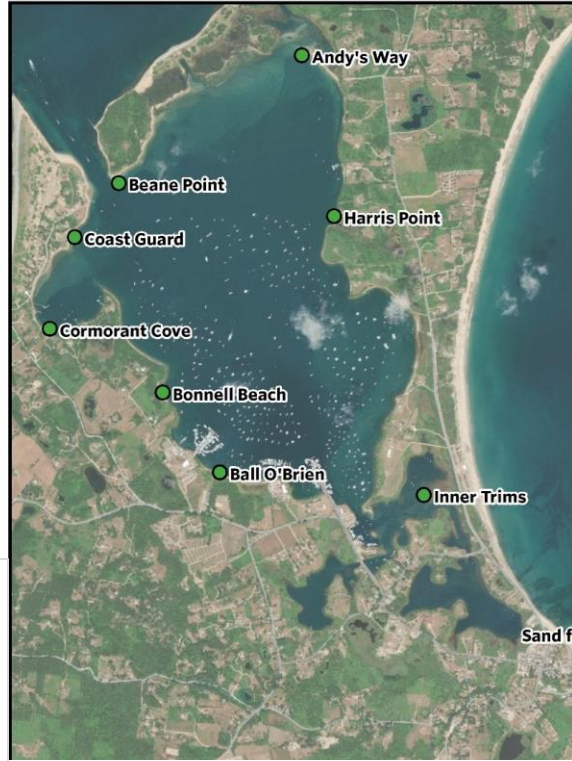
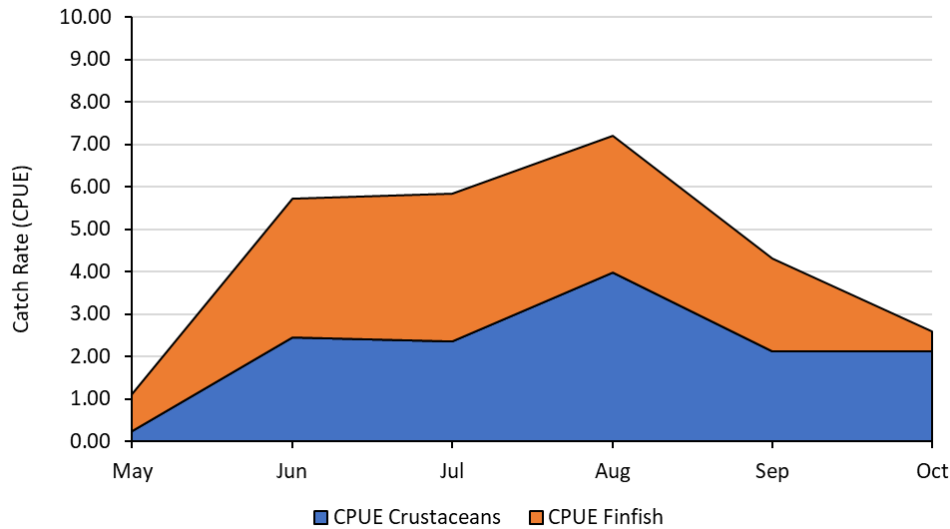


All photos are courtesy of ©TNC

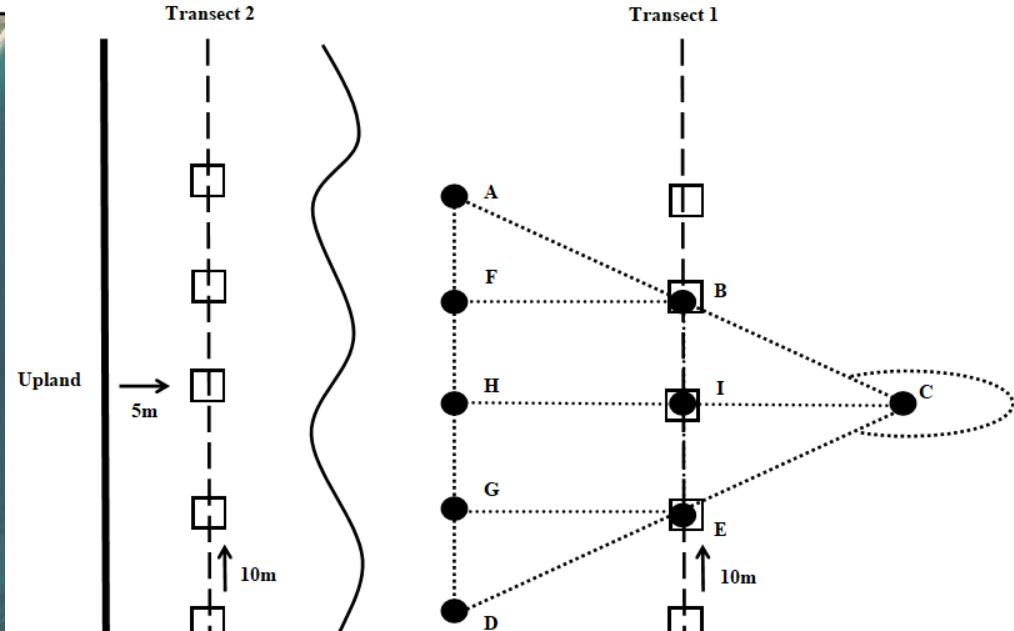
Time Series Outcomes



Fish Pot Survey, 2023



Site	Month	Temp. (°C)	Sal. (ppt)	DO (mg/L)	Site
Harris Point	MAY	14.3	28.32	9.11	Cormorant Cove
	JUN	14.4	29.58	8.88	
	JUL	25.2	30.11	7.14	
	AUG	29.9	28.89	8.60	
	SEP	24.5	30.93	7.82	
	OCT	19.3	29.87	8.69	
Andy's Way	MAY	16.1	28.24	9.12	Bonnell Beach
	JUN	14.4	30.11	8.67	
	JUL	25.5	30.85	7.91	
	AUG	24.7	30.04	8.40	
	SEP	24.8	31.00	7.99	
	OCT	19.9	29.92	8.72	



Bay Scallop Survey Totals, 2007-2023

